



2021-22 ANNUAL REPORT

WE IMPROVE LIVES,
SUPPORT FAMILIES,
AND EDUCATE
COMMUNITIES...
TOGETHER!

A photograph of a woman with long, wavy brown hair, wearing a denim jacket, hugging a young child from behind. The child is wearing a teal t-shirt with a dinosaur graphic and the text 'Dinosaurs'. They are standing on a wooden mulch surface at a playground with blue and green equipment. The background shows trees and a red slide.

*YOUR SUPPORT MAKES SPECIAL MOMENTS POSSIBLE
FOR SO MANY ACROSS THE STATE.*

A MESSAGE FROM THE BOARD CHAIR AND CHIEF EXECUTIVE OFFICER



Ron Howrigan
*Chair of the Board
of Directors*



Tracey Sheriff
*Chief Executive
Officer*

As we reflect on the past year, we want to thank you for your support. A good life is made up of special moments of accomplishment, connections, and happiness, and your support makes those moments possible. Every day, there are people who are experiencing that small moment of joy and victory through the Autism Society of North Carolina's programs and services, and we are honored to help create those moments that build someone's best life.

Together, we have impacted, in a meaningful way, the lives of more than 50,000 individuals who received direct supports from the Autism Society of North Carolina. We've also taught an additional 365,000 how to support individuals with autism through our outreach efforts. For more than 50 years, we've been helping people build their best lives and we want to thank each one of you for the joy you share.

- ♥ To the people with autism who give us the opportunity to help you reach your goals, thank you for all you contribute to our communities and the ways you enrich our lives.
- ♥ To the families we serve, thank you for letting us be a part of your lives. We see and admire how hard you work to support your loved ones.
- ♥ To the Autism Society of North Carolina staff, thank you for taking so much pride in your work and for seeking every opportunity to impact and improve lives.
- ♥ To our donors, thank you for your leadership and friendship and for your generous gifts to help loved ones reach their goals and dreams.

Because of each of you, special moments happen across the state every day. Here are examples of what those moments look like and how much we have to celebrate:

- More than 200 adults with autism improved their employment skills or received the call that they were selected for the job they applied for.
- More than 720 children and adults learned new skills, made friends, and improved their physical well-being at Social Recreation, IGNITE, and our day programs.
- More than 200 children and adults were able to experience the magic of summer camp at Camp Royall, while other campers visited throughout the year.
- Direct Care staff served hundreds of individuals in their homes and in our residential programs to increase skills like communication and independence.
- Our Autism Resource Specialists and Clinical Department supported individuals and families through one-on-one training, webinars, and consultations. They also educated communities through presentations and training, including more than 2,300 teachers, school staff, principals, and family members who learned to develop better skills in working with students with autism and improving school relationships.

Regardless of where you or your loved one is on the spectrum or phase of life, the Autism Society of North Carolina is here for you. We will continue to work together to ensure that our efforts are reaching people of all backgrounds as we work together towards greater acceptance for neurodiversity. Because we have each other, we will build our best lives!

We are partners for a lifetime.

Handwritten signatures of Ron Howrigan and Tracey Sheriff. Ron's signature is on the left, and Tracey's is on the right.



OUR MISSION

The Autism Society of North Carolina improves the lives of individuals with autism, supports their families, and educates communities.

50,000

individuals with autism and their families received direct supports

.....

365,000+

learned how to support individuals with autism through our outreach efforts

A PARTNER FOR A LIFETIME

The Autism Society of North Carolina (ASNC) is the leading statewide organization serving people across the spectrum throughout their lifetimes. We reach out to families when they learn their children have autism and work alongside them to ensure that their children build fulfilling lives.

The Autism Society of North Carolina provides individuals with autism, their families, and their communities with life-improving programs and supports unavailable anywhere else.

WHERE WE WORK

We have 13 locations throughout the state, supporting North Carolinians in all 100 counties.





WE IMPROVE LIVES TOGETHER

The Autism Society of North Carolina's high quality, direct-support services are tailored to the unique needs of individuals with autism and enable them to have healthy, safe, and fulfilling lives in their own communities.

Our expertise in home, work, and community settings helps individuals – many of whom have significant lifelong needs – reach their maximum level of independence and achieve their goals and dreams.



Transforming Lives



Trillium Health Resources supports our Eastern NC Social Recreation programs, serving 332 individuals, and our Family Navigation program.

Clinical Services provide comprehensive treatment for all ages using evidence-based practices to develop meaningful skills and behaviors in the home, school, and community. Behavioral consultations are also available.

238 improved
**COMMUNICATION,
SOCIAL SKILLS, & BEHAVIOR**

100
counties served via
**SHORT-TERM
CLINICAL CONSULTATION**
telehealth



545+
**CHILDREN & ADULTS
GAINED SKILLS**
through one-to-one staffing

Skill-Building develops and improves communication skills, cultivates social skills, and fosters community integration through one-on-one support.

330+



gained skills to
obtain & maintain
employment

Employment & Transition supports focus on job development, job placement and ongoing support, while incorporating skill development in other areas necessary for a successful transition to adulthood.

720+
**LEARNED NEW SKILLS
& MADE FRIENDS**

Social Recreation provides camps, afterschool programs, respite care, adult programs, and social groups, to help individuals improve their social and communication skills, peer networks, and physical well-being.

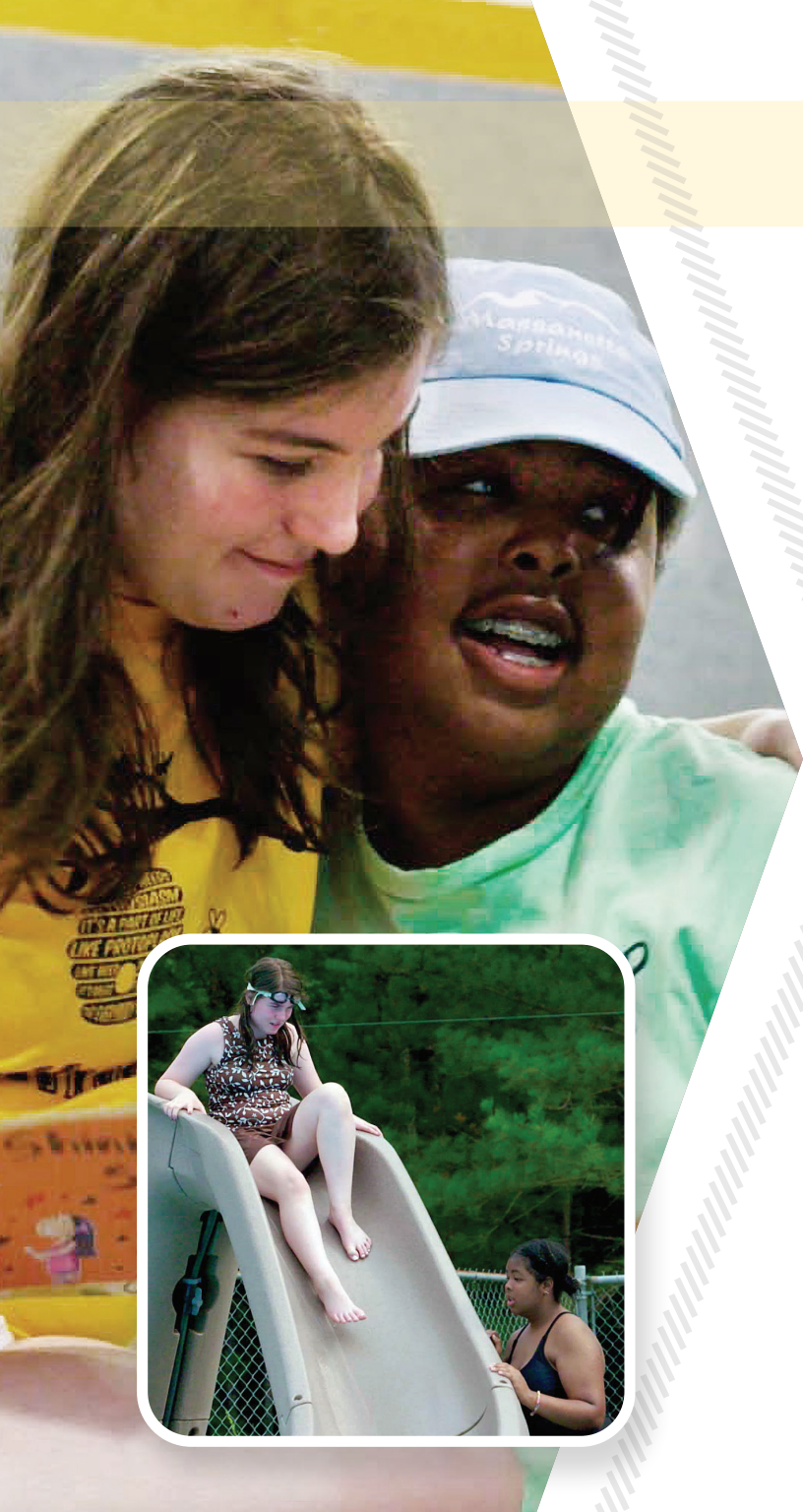
**Reported outcomes from
caregivers and participants include:**

88% reported an increase in
receptive communication*

83% improved their health and wellness
across all services and programs

97% reported their
experience as
Excellent or
Good

*The above outcome is significant because it addresses the core deficits of autism.



FACING FEARS WITH NEW FRIENDS

Kaycee and Kamani had been to other camps before. Kaycee had been left out by her peers. She wasn't allowed to go swimming, and she had to sit on the sidelines and watch other kids have fun without her. Kamani's mom was told to never bring her back again.

When the girls met at Camp Royall, they quickly became friends. Together, they tried new activities and enjoyed all of Camp Royall's activities.

***"CAMP ROYALL IS REALLY GOOD
AT HELPING PEOPLE TRY THINGS
FOR THE FIRST TIME." - KAYCEE***

When Kaycee saw the pool at Camp Royall, she was determined to go down the slide. At the top of the slide, she got nervous. With the help of Kamani and the staff at Camp Royall, Kaycee faced her fear and went down the slide.

"I faced my fears by going down the slide," Kaycee said. "I was determined knowing that someone had my back and someone was there for me."

These special moments happen every day at Camp Royall. The amazing staff has each camper's back, ensuring that they feel loved, supported, and accepted at all times. Campers make friends while singing silly songs on the hayride or by the campfire. They find the confidence to try a new food or activity, and the feeling of accomplishment lasts long after the summer.

IMPROVING LIVES

WOMEN'S GIVING NETWORK OF WAKE COUNTY

This year, Camp Royall hosted a special new event – a weekend for moms and their children on the spectrum. These weekends were made possible with a grant from the Women's Giving Network of Wake County.

"Women's Giving Network of Wake County (WGN) was thrilled to support the Autism Society of North Carolina's first-ever Women's Weekend at Camp Royall," said Sarah Décarpentrie, WGN Grants Chair. "The WGN members felt that this was an exciting and impactful opportunity to support not only local children with autism through a fully-supported weekend at camp, but this was also an opportunity to support and empower their moms."

While the children enjoyed all of Camp Royall's activities, the mothers had time to relax and recharge on their own. The mothers also had time to network with each other and attend trainings with staff from the Autism Society of North Carolina.

"I THOROUGHLY ENJOYED MY TIME SPENT WITH OTHER MOMS WHO HAVE FACED SOME OF THE SAME CHALLENGES THAT I HAVE. THEY'RE A STRONG GROUP OF WOMEN." - CAMP ROYALL MOM

"My 11-year-old son stated that the weekend was one of his happiest moments," said one mom. "I gained resources, a break from my hectic normal environment, a network of relatable people to reach out to for support, and my will to parent a child with special needs has been strengthened. Meeting other moms and guardians of special needs children made me more confident as a mom. The experience opened my eyes to my own capabilities and my son's."





WE SUPPORT FAMILIES TOGETHER

The Autism Society of North Carolina empowers families by helping them to understand their options, learn best practices, and connect with community resources.

We help them care for their children at home and in the community and see them through times of crisis.

We are there for families from the time of diagnosis, through the school years, and into their child's adult life.

7,200+

people learned about resources and how to solve problems from Autism Resource Specialists

Autism Resource Specialists (ARS) are available to guide families in all 100 counties of North Carolina. They are all parents of children or adults with autism themselves, as well as trained professionals with many years of experience.

521+ **#help**

MEETINGS

attended by ARS to help families and individuals on issues such as IEPs or understanding a diagnosis

31,100 

FAMILIES RECEIVED SUPPORT

from our Support Groups with outreach to underserved populations

Support Groups provide families an opportunity to encourage one another, share experiences and solutions, and have a place where they feel understood.

77 **SUPPORT GROUPS**

provided support to individuals and families

420 

families assisted through crisis events

Direct supports and programs

keep children with autism in their communities and maintain quality of life for all family members.

Reported outcomes from caregivers and training include:

100%

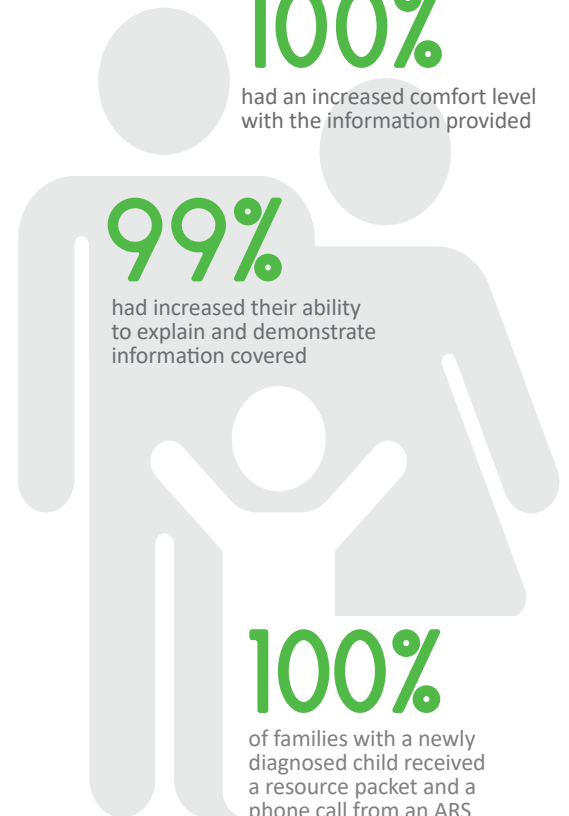
had an increased comfort level with the information provided

99%

had increased their ability to explain and demonstrate information covered

100%

of families with a newly diagnosed child received a resource packet and a phone call from an ARS





ENCOURAGING FAMILIES TO DREAM BIG

When Hetty Scopel was Navell's first grade teacher, she saw academic potential in him that others didn't. After the school year, she began working at the Autism Society of North Carolina so she could continue providing services to Navell and his family. She now works with several participants and families she met through teaching.

When it came time for high school, Hetty helped Navell apply for programs where he'd receive the support system he needed. He was accepted into the Middle College at GTCC High Point, but during the open house, Navell's mom, Hilda, worried that it was going to be too overwhelming for him. Hetty reassured Hilda that Navell was ready and would thrive, because he had the best team behind him.

"It's an amazing experience to see the things that Navell would be able to do and the experiences he would be able to have," said Hilda. "And that's because of Hetty. She brought things out of him that I didn't even know existed."

***"THE AUTISM SOCIETY OF NORTH CAROLINA
ABSOLUTELY INSPIRES US TO FIGHT FOR THESE
CHILDREN, TO EDUCATE THEIR FAMILIES, TO
HAVE HIGH EXPECTATIONS, AND TO REALLY
RAISE THE BAR FOR THEM."*** - HETTY SCOPEL



In addition to providing respite services for families, Hetty educates parents and caregivers about autism and how to help their children thrive. She encourages them to have the biggest of dreams for their children, and then walks alongside them as they work toward those goals.

SUPPORTING FAMILIES

TEAM DECLAN

Declan Powell was diagnosed with autism when he was three. When his family went to the Triangle Run/Walk for Autism, they felt they weren't alone anymore. They saw other families and teams supporting loved ones, which gave them hope. They were determined to build a big team so that they could share that hope with others.

Since that first event, the Triangle Run/Walk has become a holiday for the Powell family. They have raised more than \$40,000 for local programs and services and spread team spirit through activities like flash mobs and asking friends and family members from around the world to post pictures of their virtual run/walks.

"IT IS EXCITING BECAUSE I CAN'T BELIEVE THEY'RE RUNNING FOR ME AND SUPPORTING ME. THAT'S INCREDIBLE."

- DECLAN POWELL

"It's a lot of work, but the why behind everything is people talking about autism, people talking about inclusion, and people talking about the Autism Society of North Carolina," said Kerrie Powell, Declan's mom.

In 2022, Team Declan was more than 150 people strong. Declan's family, classmates, teachers, and former direct support professionals came to walk. His school sponsored the entries of every athlete and held a pep rally to celebrate Declan's journey and support the Run/Walk team.

"For parents who are hearing the word 'autism' for the first time, I highly recommend going to the Run/Walk for Autism," Kerrie said. "It's going to give you hope. It will help you on your journey."





WE EDUCATE COMMUNITIES TOGETHER

As the clinical leader in our state, the Autism Society of North Carolina trains professionals who work with individuals with autism in evidence-based best practices, thereby increasing the capacity and quality of care.

We also work to increase understanding and acceptance of people with autism in the community, ensuring that they are treated with dignity and their unique talents are valued.

Community outreach through trainings, social media, publications, and events to increase awareness and promote inclusion for all.

400+
TRAININGS



5,200+
PEOPLE

Trainings were held in-person and were also available through webinars to all 100 counties.



3YRS 1MO
AVERAGE AGE OF DIAGNOSIS IN NC

Increased public awareness has lowered the age of diagnosis vs. the national norm, enabling individuals to receive treatment sooner.



250,000+

people learned how to support individuals with autism through our external outreach efforts.

Professional training for school staff, health-care professionals, first responders, and other members of the community who work with individuals with autism

200+



FIRST RESPONDERS

developed skills to care for people with autism in emergency situations

450+ **HEALTH-CARE, DIRECT-CARE, & FOSTER-CARE PROFESSIONALS**

increased their understanding of autism and best practices

2,300+ **SCHOOL STAFF, PROFESSIONALS, & CAREGIVERS**

developed better skills to work with students with autism

99%



plan to make changes to improve their work with individuals with autism



INVITING NEIGHBORS TO PARTICIPATE

The Greenville office hosts multiple clubs throughout the week, including Art Club, Dance Club, Gaming Club, and Health and Wellness Club. The clubs offer benefits to participants with autism – they build skills, make friends, and work towards the goals that will enable them to live their best life. But the clubs also benefit the larger Greenville community, because they get to be a part of the activities and learn more about autism.

One frequent guest at Health and Wellness Club is Deputy Drifter, the Pitt County Sherriff Office's therapy dog, and Drifter's handler, Deputy Christopher Curtis. Before walking with the group, Deputy Curtis didn't know much about autism. Now, he is committed to gaining additional training for himself and for his colleagues, so that they can better serve all members of the community.

"I HAVE LEARNED WAYS TO BE ABLE TO INTERACT AND TO COMMUNICATE THAT I DIDN'T KNOW HOW TO DO BEFORE."

- DEPUTY CHRISTOPHER CURTIS

Others are finding fun and purpose by joining the clubs: East Carolina University students are confirming their career paths in therapeutic fields at Health and Wellness Club, and members of the Greenville arts community are finding inspiration for their own work at Art Club. For the Autism Society of North Carolina, it's important that everyone is invited and can take part.

EDUCATING COMMUNITIES

DANIEL & DIANNA JORDAN

The Jordan family of Elizabeth City has used their passion for music to raise more than \$100,000 for the Autism Society of North Carolina with the NC Rock Autism Music Festival.

The Jordans' son, Jagger, was diagnosed with autism when he was 2. Over the years, Jagger has benefited from therapy, and his parents, Daniel and DiAnna, started thinking about having a music festival to help other families affected by autism. Daniel plays in a local band, The Daniel Jordan Band, so he began reaching out to other musicians.

They drew on support from their community to host the event, with local business owners providing free event space, experienced security staff volunteering their time, and bands agreeing to play for free. "The community, really, it was unbelievable how supportive they were," DiAnna said.

"I WANT MY SON, AND ADULTS WITH AUTISM, TO HAVE THE SAME CHANCES AND SIMILAR OPPORTUNITIES."

- DIANNA JORDAN

It was important to the Jordans that the event be a fun celebration for families. They created an indoor, quiet space where families could relax if they had loved ones with special needs who needed to take a sensory break. DiAnna said it can be isolating to have a child with special needs, and the couple hopes to have more of those families come out each year.

They also hope the annual summer festival will build awareness in the community. "The more we know about something, the easier it is to learn to accept it," she said. "I want the world to be more accepting of differences."



WE CARE TOGETHER

The Autism Society of North Carolina community includes passionate, committed volunteers, corporate partners, and donors. We extend our heartfelt thanks to our donors who have made it possible for individuals with autism to have healthy, safe, and fulfilling lives in their communities.

This list reflects donations received on or between July 1, 2021, and June 30, 2022. Please contact Beverly Gill if you have any questions at 919-865-5056, or bgill@autismsociety-nc.org.

\$100,000 AND ABOVE

Cardinal Innovations Healthcare
Evernham Family,
Racing for a Reason Foundation
The Ireland Family Foundation
BlueCross BlueShield of North Carolina
U.S. Department of Health
& Human Services
Erin and Ray Evernham
Lori and Gregg Ireland
Lorraine and Dale Reynolds

\$50,000-\$99,999

Autism Strong Foundation
Mary Evernham
Kim and Jeff Woodlief

\$25,000-\$49,999

321 Coffee - Farmer's Market
CADCO Construction Company
Credit Suisse
NC Rock Autism Music Festival
Teresa and John Sears
Tracey and Henry Smith

\$10,000-\$24,999

Applied Vision Works
Big Rock Blue Marlin Tournament
Cape Fear Memorial Foundation
Costanzo Family Charitable Trust
EarthShareNC
Hardison & Cochran Attorneys at Law
Live Oak Bank
Premiere Communications & Consulting,
A Kane Company
The Cannon Foundation
The Leon Levine Foundation
Christine and Ben Cochran
Maria Costanzo
Tammie and Jimmy Crawford
Carol and Douglas Fink
Donald Hadley
Torrie and John Kline
Susan Popkin
Karen Schaefer
Kristi and Jeff Shaw
Teresa and Ted Van Duyen
Denise and Steve Vanderwoude

\$5,000-\$9,999

Alwinell Foundation of Charlotte
AmazonSmile Foundation
Dominion Energy Charitable Foundation
Duke Energy
Eastern Petroleum Corp.
Eaton Corporation
First National Bank of Pennsylvania
Galloway Ridge Chatham County
Charitable Fund
IBM Employee Services Center
The Jack Fanning Memorial Foundation
John William Pope Foundation
MassMutual's Special Care Program
Novant Health
PPD Development
PRA Group
Rockism For Autism
Samuel P. Mandell Foundation
The Cooper Royall Foundation
Truist
Wake Forest Fire Department
Wingmen Motorcycle Club

The Winston-Salem Foundation
Jane and Douglas Ball
Lindsay and Dr. Jim Bedford
Amy and John Brien
Mary Louise and John Burress
Caroline and Bruce Cameron
Tammy and Ronnie Early
Tina Gill
James Glenn
Carolyn and Bill Gooden
Bridget Harrell
Meg and Gary Jack
Lynne and Nevan Little
Heather and Richard Mason
Phyllis McGovern
Cyndi and Ronnie McNeill
Heather Moore and Steven Jones
Dr. Jim Phillips
Pamela Rogers
Jill and Doug Terry
Leigh and Jeff Vittert

\$2,500-\$4,999

ASNC New Hanover County Chapter
Autism In Motion Clinics
Catawba Valley Community Endowment,
*a component fund of the North Carolina
Community Foundation*
Combined Federal Campaign
Corning
Del Mar Center for Behavioral Health
Diversified Property Services
Duke Center For Autism
& Brain Development
Inspiro Professionals of NC
Jaguar Land Rover Asheville
John W. Roffe and Marjorie A. Roffe
Endowment (for Moore County),
*a component fund of the North Carolina
Community Foundation*
Landfall Foundation
The Mary Lynn Richardson Fund
Media Two Interactive
MPI Foam Insulation
NC ABLE Program
Precision Walls
Raleigh Diamond Fine Jewelry
Strowd Roses
The Summer Camp Fund
Surry Insurance
The Players Golf Association
Toro Cup
Triangle Stop Food Stores
Trillium Health Resources
Umicore
Under the Oak Restaurant & Catering
Union County Community Foundation,
an affiliate of the Foundation for the Carolinas
University of Delaware
UPS Foundation
Wells Fargo Community Support Campaign
Williams Overman Pierce
Women of Fearrington, Inc.
Woodruff & Associates CPA
Ashlyn and Mark Allred
Melonia and Dr. Randy Anderson
Theresa and Randy Anderson
Ann Bressler and Robin Barnes
Beth and Erik Burrus

Beth Byerley
Beth and Kenneth Carnes
Vicki and Rick Cornwell
Patrick Falvey
Michelle and Tommy Glenn
Sandra and Ed Hooks
Kristen and Ron Howrigan
Angie and Joe Jackson
Sharon Jeffries-Jones and Steve Jones
Meredith and Mark Johnson
Tom Kenan
Jennifer and George Lambert
Helene and Bill Lane
Sara and Steven Macko
PJ and Allan Middleton
Kristy and Dr. Aleck Myers
Shital Patel
Tom Perkins
Rebecca and Charlie Peters
Ed Pigott
Joshua Reda
Candace and Joseph Roberts
Karen and Larry Salefsky
Kristin and Scotty Selby
Mark Stephens
Don Stroud
Jacqueline and Dereck Whittenburg
Melissa and Kenny Woodruff

\$1,000-\$2,499

ABS Kids
Acorn Alcinda Foundation
Alpha Phi Omega
American Woodmark
ASNC Crystal Coast Chapter
ASNC Edgecombe/Halifax/Nash/Wilson
County Chapter
ASNC Mecklenburg County Chapter
ASNC Richmond County Chapter
ASNC Sampson County Chapter
ASNC Wake County Chapters
Bank of America
Barringer Construction
Beavers Family Dentistry
Behavior Consultation
& Psychological Services, PLLC

Behavioral Consulting for Autism, PLLC
Blue Cross Blue Shield of North Carolina
Bonitz
Breakthrough Autism
Bright Funds Foundation
Bullpen Fitness
Cape Fear Center for Inquiry
Carolina Creations RDU
Center For Pediatric Behavioral Health
ClaroLux Landscape Lighting
Clinic for Special Children
Clouds Brewing Durham
Coldwell Banker Realty - Ballantyne Office
Colonial Materials
Community Foundation of
Greater Greensboro
Cornerstone Physical Therapy
Country Roads Miata Club
Craven County Unrestricted Endowment
Fund, *a component fund of the North Carolina
Community Foundation*
Creekside Elementary School
Cross River Therapy
Currituck-Dare Unrestricted Fund,
*a component fund of the North Carolina
Community Foundation*
David Allen Company
Delta Coaches, LLC
Diamonds Direct Foundation
Disabled American Veterans, Chapter 26
East Coast Volleyball Academy
Easterseals UCP North Carolina & Virginia
EmergeOrtho - Wilmington
Epic Games
Exeter Building Company
Finish Line Timing
Full Spectrum Cleaning
Grady White Boats
Grinz Orthodontics Asheboro
Hakuna Wellness Center
Harrisburg United Methodist Church
HMS Host International
Hoke County Unrestricted Endowment,
*a component fund of the North Carolina
Community Foundation*
Holy Infant Catholic Church
Hospitalist For Hire

Huckleberry Trail Farm
ISA Elite Training
Jackson County Community Fund,
*a component fund of the North Carolina
Community Foundation*
Johnson Family Farms
Knier Properties
Lancaster Law Firm
Landura Management
Lenovo
Lorraine Cooper Johnston County
Community Foundation Endowment,
*a component fund of the North Carolina
Community Foundation*
Martha Frances Pruitt Endowment Fund,
*a component fund of the North Carolina
Community Foundation*
McArt Masonry
McKinney Immigration Law
Mission Children's Hospital
Morehead City Fire & Rescue Auxiliary
NC Conference Branch Women's
Missionary Society
Northwest Pediatrics
Northwestern Mutual
Oowee Products
Partners Behavioral Health Management
Paypal Giving Fund
Pediatric Possibilities
Pirate Pediatrics
Raleigh Kiwanis Foundation
Richmond County Disc Golf Group
Rotary Club Of Davidson
Shamrock Nutrition
Simms Mechanical
Spyglass Promotions
St. Matthew Catholic School
Starbucks Foundation
Surry County Sheriff's Department
T.E.A.M. Air Conditioning Company
The Eisner Charitable Fund
Triangle Community Foundation
Triangle Wealth Management
United Way of Davie County
United Way of the Greater Triangle
Upstate Racing
Uptown Airport

Wake Electric Membership Corporation	Estate of Henry Eide	Brenda and Dr. Richard Morrison	\$500-\$999
Wake Family Law Group	Allison and Douglas Eisner	Heather Morrison	3M
Walmart	Kerri and Jeremy Erb	Nancy and Joe Nestor	A+ Tree & Crane Services Inc.
Warren and Imogene Kinder Owens Memorial Endowment, <i>a component fund of the North Carolina Community Foundation</i>	Jenny and Mike Farmer	Beth and Chris Norton	AbbVie
Weyerhaeuser Company	Dr. Amy and Vance Fowler	Hites Patel	Albemarle Electric Membership Corporation
White & Johnson Pediatric Dentistry Wilmington	Leeann and Mark Garms	Liz Peloquin	Alfredo Negrete V&A Concrete
White Memorial Presbyterian Church	Liza and Mark Gosnell	Brenda Penland	Alliance One International
Wilmington Health	Dr. Jemma and Chris Grindstaff	Nina and Scott Pernel	Allied Rehab
Winterville FWB Church	Nina Hadley	Erika Petersen	Arboretum Dental
Peg and Jay Adamczyk	Andrew Hamberg	Elizabeth and Jeffrey Phillippi	Asbury Associates
Jennifer and Jimmie Adams	Linda and James Harvey	Nancy Popkin and Mark Stanback	ASNC Craven County Chapter
Penelope and Ed Aluise	Dan Hatley	Bob Reichel	ASNC Pitt County Chapter
Dr. Dennis Bahler	Jenny and Josh Hines	Paul Reynolds	ASNC Rowan County Chapter
Richie Barbour	Katherine and John Hodges	Dawn Rohlik	Bayada Home Health Care
Julie and Scott Bare	Bill Hoffman	Linda and Kevin Routh	Carolina Pediatrics of the Triad
Jennifer Beason	Laura and Daniel Holmes	Terry and Ed Scott	Carteret Co. Farm Bureau
Carr Bender	Jen and Michael Hubbard	Kathleen and Chris Seawell	Centering on Children
Anthony Blackman	Melissa and Matt Huemmer	Katie and Tracey Sheriff	Charlotte Ruff Ryders
Peter Bley	Robert Hunter	Nancy and Michael Smith	Children's Health Services
Mary Beth Bobek Legere and Brian Legere	Ruth Hurst and Tom Wiebe	Amy and Ken Soderstrom	Christ Our King Community Church
Brenda and Dave Bodenheimer	Lee Jackson	Michelle Son	Columbia Forest Products
Sally and Mack Brown	Dave Jobe	Jamie and Matt Soule	Craven County Wood Energy
Dr. Kristi Cabiao	Rachel and Matt Jones	Louise and Michael Southern	Dogwood State Bank
Terri Chegidden	Rob Kauffman	Anne and Ed Stanek	East Coast Contracting
Dr. Rob Christian	Lisa and David Kaylie	Gina and Jeffrey Stocton	Enviva Holding LP
Ingrid and Neal Conley	Laurie and Kyle Kennedy	Dan Talbert	Farm Bureau Carteret
Michelle and Bill Corcoran	Karen and Tom Knox	Mitch Taylor	Fortitude Roofing Company
Kim Costello and Lee Hamilton	Sharon Kress	Cynthia and John Thomas	Franklin County Education Fund
Matt Cox	Jennifer Lail and Daniel Wertman	Jennifer Thompson and Frank Baumgartner	Endowment, <i>a component fund of the North Carolina Community Foundation</i>
Janet and James Cozart	April and Tommy Lawrence	Kate and Joel Tomaselli	GE Foundation
Sandy Daston	Dessie and David Laxton	Robynn and Micah Tomaselli	Highland Park Baptist Church
Catherine Daubek	Aubrey Linville	James Trotter	Holly Springs Restaurant Group
Patrick Davis	Jackie and Jamie Lowrey	Susan and Dr. Skip Tyson	Hope Power & Industrial
Anne and David De Silva	Ken Mack	Beau Waddell	Huff Consulting
Ryan Degnan	Jen Mahan and Doug Bretz	Jennifer and Jonathan Weiss	Intracoastal Realty - Mandy Bobo
John Dickey	Lina Sue and Dr. Steve Marron	Judy and Paul Wendler	Johnson Granite
Cheryl and John Dietz	Frances and Mike Martin	Lisa West	JPI Associates
Paula Dinnerstein	Meredith and Shane McCumbee	Kristy and Andrew White	Kiwanis Club of Lee County
Maggie Donaldson	Theresa and Chuck McKee	Sharon and Chris Whitfield	Libby Hill Seafood
Russell Duncan	Kelly McGuire	Susan Whitlow	Life Alliance
Jo Ann and Russell Duncan	Catherine Perkins-Minton & Dr. Challie Minton	Bob Wilder	Marriott Charleston
Sharon Dye	Kara and Thad Moore	Katie and Lewis Wills	NC Solar Now - Raleigh
Heather Earl	Maureen Morrell	Jeannette and Kenny Woodruff	NoRa Cafe
	Tim Morris		Oak City Government Relations

Pfizer	Bruce Bowen	Kari and Monte Johnston	Prof. Joseph Sadighi
Physicians East	Bryan Bowman	Diana and Robert Jones	Julie and John Seibert
Prism Medical Products, LLC	Alexander Brigman, Jr.	Laurie Daniel Jordan and Lyndon Jordan	Terri and Richard Sharpe
Queens Grant Charter School	Angie and Doug Brown	Ann Joseph and Godshen Pallipparambil	Cathy Sheaffer
Raleigh Neurology Associates	Rhoden and Rick Brunstrom	Lisa and Dr. Scott Josephs	Molly and Steve Shimek
Raleigh Pediatric Dentistry	Linda and Michael Bryant	Michelle and Steve Karaffa	Mike Slutz
Richmond County Schools Exceptional Childrens Department	Sarah and Daniel Cain	Ruth Ann and James Keating	Billy Smith
Rockingham County Unrestricted Endowment Fund, <i>a component fund of the North Carolina Community Foundation</i>	Dr. Courtney and Daniel Cantrell	Leatha and William Kendrick	Gretchen Smith and Jeff Kirby
Rockingham Dragway	Dr. Jon Carr	Janine and Tom Kennedy	Judith Smith
Saginaw Valley State University	Ingrid and Roy Chopping	Itnuit and Tony Klein	Sherry and Dr. Dan Smith
SouthPark Dentistry	Holly and Darin Clark	Melinda Knight	Russell Snyder
Stangler Family Foundation	Kay and Dr. Harry Crews	Lauren and Ken Knowles	Niroopama Srivastava
Starling Marine	Latonya Croney	Mary Anne and Bill Kuhn	Jamie and Richard Stephens
Surry-Yadkin Electric Membership Corporation	Karen and Michael Crow	Steffen and Elizabeth Kuronen	Dr. Barbara and Dr. Gordon Still
TEGNA Foundation	Todd Dameron	Ian Langley	Kimberly and Robert Stolz
The Carmax Foundation	Fredrick Davis	Sandra and Stephen Lehrman	Mindy and Tom Storrie
The Community Foundation of Western North Carolina	Adam Day	Matthew Leonard and Kourtney Huffman	Keith Sultana
The Knightly Order Of The Fiat Lux-Triangle Chapter	Susie and John Delaloye	Tyler Lubbers	Marcelo Telles
UNC SPARK	Alicia Delamere	Jason Ly	Kim and Mark Tizzard
United Bank	Dr. Pamela Dilavore	Allan MacArthur	Joseph Tonucci
Vidant Chowan Hospital	Dr. Holly and Matt Dressman	Carol and Bob Mattocks	Frisco Tshiams
Wells Fargo	Kathy DuVal and Marty Smith	Anna Maynard	Mary and Francis Tuggle
Wells Fargo Advisors	Molly Edmonds	Marcia Mayman	Sandra and Andrew Turner
Wesley Chapel United Methodist Church	Tom Elwell	Eb McFall-Roberts and Duane Roberts	Gaile and Matt Valcho
Whispering Pines Fire Rescue Association	Dr. Elizabeth Figueroa and Dr. Henry Kowalski	Gina and Herb McKim	Vicki and Stephen Vaughn
Women's Fund of Bertie-Hertford Gift Fund, <i>a component fund of the North Carolina Community Foundation</i>	John Flaningam	Summer McMurry	Jessica Villagrana
Nancy and Clay Addison	Amy Flanagan and Frank Freimund	Wendy and John Mies	Jerry Washington
Deno Adkins	Madison Gardner	Brandon Mitchell	Anita and Willie Wiggins
Jaime Alvarez	Hal Garrison	Dustin Moore	Jonathan Willard
Rachelle and Mike Angwin	Julie George	Mary Lou Moore	Dana and Eric Williams
Glenn Astolfi	Dr. Bill Gierie	Shane Moore	Rachel and David Williams
Rachna Bahri	Brian Glish	Janet Murphy	Marvin Winell
Martina and Dwayne Ballen	Amber Goettlich	Mike Murphy	Katy Witkowski
Melissa and Kirby Barbour	Mindy Govan	Amy and Jay Nelson	
Melanie Bachmeyer	Suzi Grady	Steve Nicolas	
David Bird	Lesley and Michael Graves	Carolyn and John Nowaczewski	
Marianne and Jeff Boettler	Donna Gurganus	Melissa and Jose Penabad	
Paula and Alan Bohnwagner	Charlotte Hadley	Joanne Pierce	
Phyllis Bourges	Dr. Sandra Hall	Barbara and William Pinna	
	Heather and Seth Hargrave	John Pittman	
	Janice Heine	Daniel Rauscher	
	Chandra and Dwight Hollier	David Rhyne	
	Cheryl and Thomas Howell	Georgia Ricks	
	Tracey and Cedric Jarman	Daniel Rosenblum	
		Ronda and Jim Ross	

WE ARE COMMITTED TOGETHER

We rely on donor giving to provide our high-quality programming to improve the lives of individuals with autism. As can be seen in the charts above, our program and service revenue covers only a portion of our expenses.

All of the money that we raise stays in North Carolina, with 86 cents of every dollar donated going directly to programs for individuals with autism.

The Autism Society of North Carolina is also supported by:



FINANCIAL POSITION

July 1, 2021 - June 30, 2022

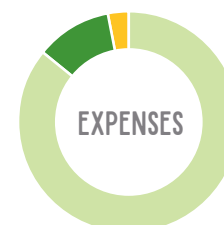
OPERATING REVENUE

Programs:	\$16,952,775	70.5%
Federal and State Grants:	\$4,606,646	19.2%
Donations, Special Events & Other Grants:	\$1,871,348	7.8%
Merchandise Sales & Other:	\$608,719	2.5%
Total:	\$24,039,488	100%



OPERATING EXPENSES

Programs:	\$21,031,711	86%
Administration:	\$2,684,521	11%
Fundraising:	\$621,148	3%
Total:	\$24,337,380	100%



ASSETS

Current Assets:	\$3,784,351	47%
Property and Equipment:	\$2,678,213	33%
Other Assets:	\$1,567,663	20%
Total:	\$8,030,227	100%

LIABILITIES

Current Liabilities:	\$2,049,549	26%
Long-Term Liabilities:	\$166,414	2%
Net Assets:	\$5,814,264	72%
Total:	\$8,030,227	100%



BUILDING OUR BEST LIVES TOGETHER

The Autism Society of North Carolina relies on donor giving to our annual campaign to improve the lives of individuals with autism, support their families, and educate communities.

Every day, there are people who are experiencing that small moment of joy and victory, and donors like you made it possible. Your gifts showed unconditional love for members of the autism community. It showed you love them for who they are and want to provide the programs and supports that will help them build their best life. It showed you want to wrap families in love and support and help teach other communities about how much better all of our lives are when everyone is included.

When you give to the Autism Society of North Carolina, you make an investment that improves lives well beyond the day you make a gift. If you give a scholarship for a camper, he will learn new skills – such as how to make a friend – and build upon them for the rest of his life.

If you give a scholarship to a family to attend a training, they will pick up tools to help them throughout their child's life. If you give a scholarship for a young adult to receive training, she will use those skills to gain employment.

Every day, new families learn their children have autism. With your help, those families become part of a loving community that works together and supports each other. Expanding this campaign will ensure that individuals with autism build their best lives.

Together, we can make a difference for the growing number of loved ones with autism.

BOARD OF DIRECTORS

Executive Committee

Ron Howrigan

Chair

Kristin Selby

Vice Chair

Scott Taylor

Second Vice Chair

Craig Seman

Secretary

Doug Brown, CPA

Treasurer

Chris Whitfield

Immediate Past Chair

Leadership Team

Tracey Sheriff

Chief Executive Officer

Paul Wendler, CPA

Chief Financial Officer

Kerri Erb

Chief Program Officer

Kristy White

Chief Development Officer

Eb Roberts, Atty.

*Chief Human Resources Officer
and General Counsel*

Kari Johnston

Sr. Director of Services

Directors

Stephanie Austin

Rob Christian, M.D.

Fredrick A. Davis, II

Tenisea Higgins

Steven Jones, Atty.

Steve Love, Ph.D.

LaChanda Solomon

Whitney Sukonick, MA, LPA, BCBA

Clinical Director

David Laxton

Director of Communications

Kim Tizzard

Director of Family Support

Dave Lippard

Director of IT

Jennifer Mahan

Director of Public Policy

Tim Ferreira

Director of Quality & Compliance

*Our entire Board of Directors proudly supported our
mission through their time, talents, and contributions.*